

Plane Swivel Joints

Handles single & multi-plane swivel movement with positive sealing. Available in 1" through 6" sizes.

Repair
Simplicity
Replaceable
Seals
Long-life

Special design features :

- Two rows of widely spaced bearings support heavier loads.
- Three-piece design simplifies repair.
- Spring energized seals offer leak-tight sealing at all pressures, including vacuum.
- Threaded styles are Nitrotec[®] treated for corrosion and wear resistance.
- Seal can be replaced without removing bearings.
- Available in three seal materials that are compatible with many gasses, fluids & chemicals.



Barco Plane Swivel Joints provide 360° movement between piping elements in one or more planes for conveying or transferring a wide range of fluids including oils, water, air, gasses and chemicals.

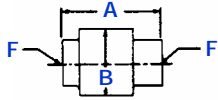
Available in three types: threaded, welded and flanged to suit your application.

Simple design permits ready installation and fast easy maintenance.

Easy numbering system

Plane Swivel Joints

Barco supplies several different styles and sizes to suit your particular application.



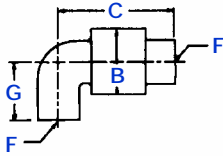
STYLE

Welded end BD-5141
Threaded end BD-5241

THREADED END STYLE



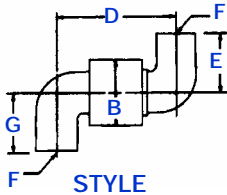
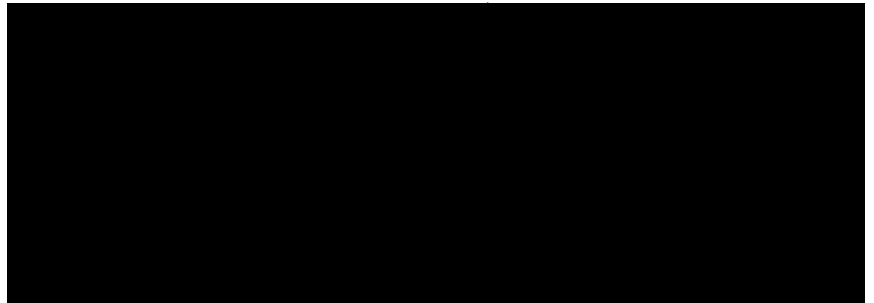
* also available in BSPT threads



STYLE

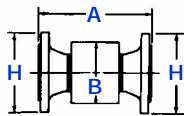
Welded end BD-5142
Threaded end BD-5242

WELDED END STYLE



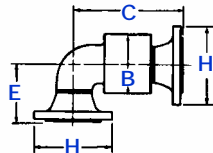
STYLE

Welded end BD-5143
Threaded end BD-5243



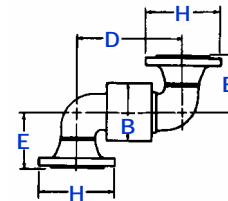
STYLE

BD-5341



STYLE

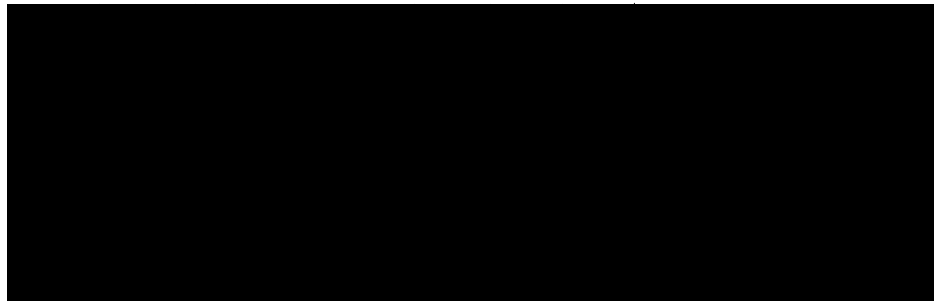
BD-5342



STYLE

BD-5343

FLANGED END STYLE



Supplied with ANSI 150 lb.
Flange pressure temperature
ratings for over +100°F (37.5°C)
Special flanges available.
Contact Barco



A DIVISION OF MARISON INDUSTRIES

Barco International
1100 Alexander Court
Cary, IL 60013-1892
Phone: (847) 516-0900
Fax: (847) 516-5590