

BARCO SERIES **1/8" E-1**

# Air and Hydraulic Rotary Union

*Dependable,  
Economical,  
Long Life for  
Air & Hydraulic  
Applications*

## Special Design Features

- Carbon graphite to hardened steel mechanical seals.
- Available in U.S. and metric thread specifications.
- Available in both outboard mounted and shaft mounted styles.
- Small size fits space restricted installations.
- Maintenance-free.  
Bearings lubricated for life.



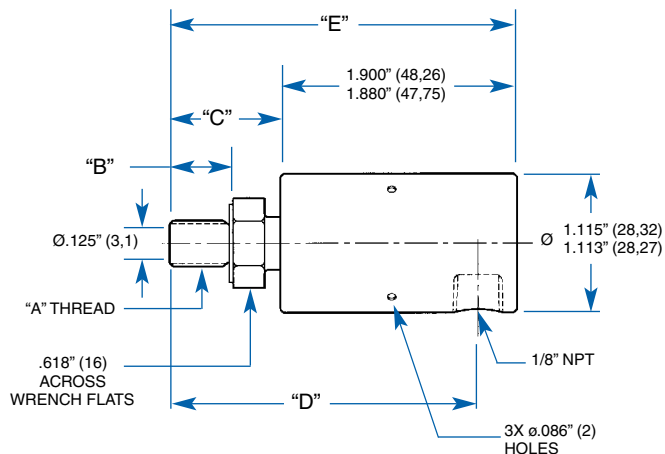
The Barco E-1 Rotary Union is a dependable, economical connection for many air and hydraulic applications, where speeds do not exceed 3500 RPM.

Capable of handling hydraulic pressures up to 1000 PSI (70 BAR) in non-shock applications and 150 PSI (10,3 BAR) in pneumatic use.

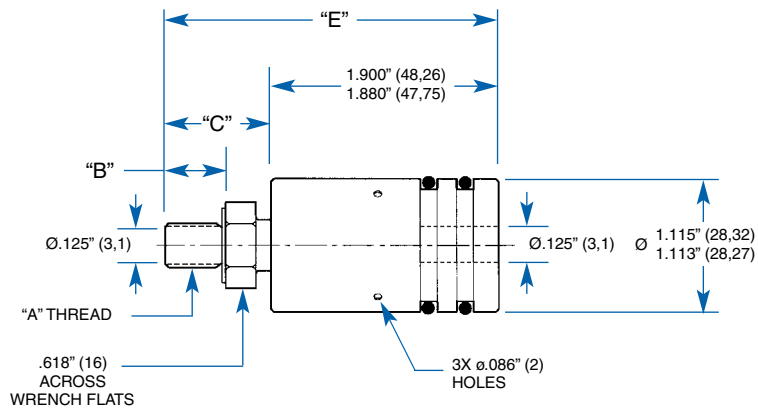
Typical applications for the E-1 are clutches, index tables and machine tools.

### Operating Data

<b>Max. Air Pressure</b>	150 PSI	10,3 BAR
<b>Max. Hydraulic Pressure</b>	1000 PSI	70 BAR
<b>Max. Temperature</b>	250°F	+121°C
<b>Max. Vacuum</b>	28 in. Hg	6,7 Kpa
<b>Max. Speed</b>	3,500 RPM	3500/MIN.



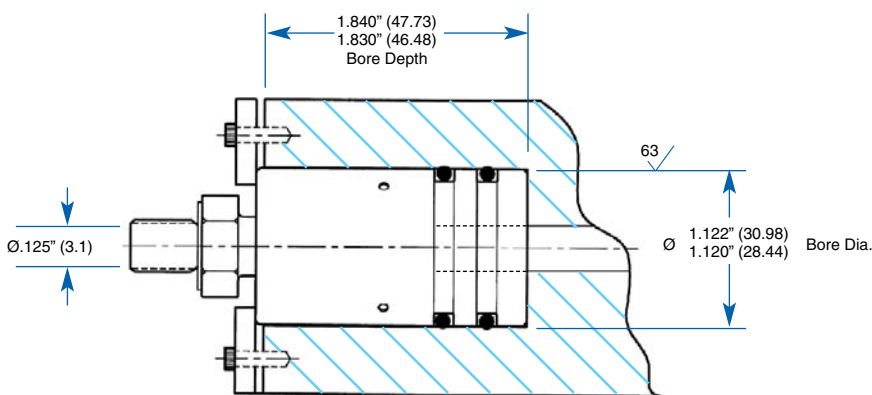
**OUTBOARD  
90° Model**



**SHAFT MOUNTED  
Straight Model**

Outboard PART NUMBER	Shaft Mounted PART NUMBER	"A" * THREAD	"B"	"C"	"D" 90° MODEL	"E"
BC-54636-02-01	BC-54682-02-01	3/8" - 24 UNF (R.H.)	.50" (12,7)	.87" (22,0)	2.45" (62,2)	2.76" (70,1)
BC-54637-02-01	BC-54683-02-01	3/8" - 24 UNF (L.H.)				
BC-54638-02-01	BC-54659-02-01	1/8" NPT (R.H.)	.50" (12,7)	.87" (22,0)	2.45" (62,2)	2.76" (70,1)
BC-54658-02-01	BC-54684-02-01	M10 x 1,0 (R.H.)	.43" (10,9)	.86" (21,8)	2.44" (61,9)	2.75" (69,8)
BC-54640-02-01	BC-54681-02-01	G 1/4" - 19 BSPP (R.H.)	.51" (12,9)	.86" (21,8)	2.44" (61,9)	2.75" (69,8)

\* Special threads are available. Contact Barco.



**Barco  
International Headquarters**  
1100 Alexander Court  
Cary, IL 60013-1892  
Phone: (847) 516-0900  
Fax: (847) 516-5590



A DIVISION OF MARISON INDUSTRIES

[www.barcoseals.com](http://www.barcoseals.com)  
email: [info@barcoseals.com](mailto:info@barcoseals.com)