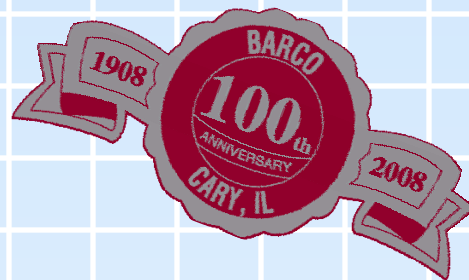




BARCO 5200 SERIES

Plane Swivel Joints

Handles single & multi-plane swivel movement with positive sealing. Available in 1" through 6" sizes.



Special design features :

- Two rows of widely spaced bearings support heavier loads.
- Three-piece design simplifies repair.
- Spring energized seals offer leak-tight sealing at all pressures, including vacuum.
- Seal can be replaced without removing bearings.
- Available in three seal materials that are compatible with many gasses, fluids & chemicals.



Barco Plane Swivel Joints provide 360° movement between piping elements in one or more planes for conveying or transferring a wide range of fluids including oils, water, air, gasses and chemicals.

Available in three types: threaded, welded and flanged to suit your application.

Simple design permits ready installation and fast easy maintenance.

Easy numbering system

BD-5241 0 - 16 - 01

- 01 Buna-N Seal -40°F to +225°F (-40°C to +107°C)
- 02 Teflon® Seal -20°F to +325°F (-30°C to +162°C)
- 06 Viton Seal -20°F to +300°F (-30°C to +150°C)

Size Code	16	24	32	48	64	66
= in inches	1"	1-1/2"	2"	3"	4"	6"
= millimeters	25,4	38,1	50,8	76,2	101,6	152,4

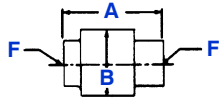
- 0 Carbon steel
- 1 Stainless steel (special orders only)

Style of connection and angles



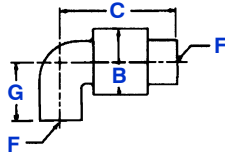
Plane Swivel Joints

Barco supplies several different styles and sizes to suit your particular application.



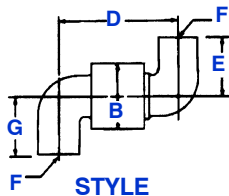
STYLE

Welded end BD-5141
Threaded end BD-5241



STYLE

Welded end BD-5142
Threaded end BD-5242



STYLE

Welded end BD-5143
Threaded end BD-5243

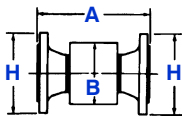
WELDED END STYLE (available in 3" thru 6")

JOINT SIZE	SIZE CODE	A	B	C	D	E	Maximum cold working Pressure psi (Kg/cm ²)
3" 75mm	48	12.88" (327)	5.50" (140)	11.95" (304)	10.88" (276)	3.00" (76)	1000 (70)
4" 100mm	64	13.22" (336)	7.00" (178)	13.22" (336)	13.22" (336)	4.00" (102)	1000 (70)
6" 150mm	66	16.75" (425)	9.00" (229)	18.75" (476)	20.75" (527)	6.00" (152)	750 (53)

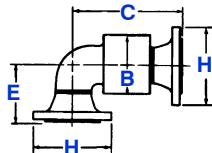
THREADED END STYLE (available in 1" - 3")

JOINT SIZE	SIZE CODE	A	B	C	D	E	G	* PIPE THREAD F	Maximum cold working Pressure psi (Kg/cm ²)
1" 25mm	16	4.19" (106)	2.50" (64)	4.38" (111)	4.59" (117)	2.50" (64)	2.50" (64)	1" NPT	1250 (88)
1-1/2" 40mm	24	4.62" (117)	3.25" (83)	5.06" (128)	5.50" (140)	3.25" (83)	3.25" (83)	1-1/2" NPT	1000 (70)
2" 50mm	32	5.88" (149)	4.00" (102)	6.81" (173)	7.50" (191)	3.50" (89)	3.69" (94)	2" NPT	1000 (70)
3" 75mm	48	6.88" (175)	5.62" (143)	7.25" (184)	8.40" (213)	4.69" (119)	4.69" (119)	3" NPT	1000 (70)

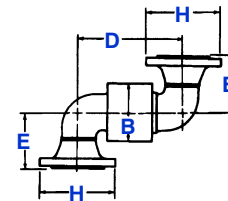
* also available in BSPT threads



STYLE
BD-5341



STYLE
BD-5342



STYLE
BD-5343

FLANGED END STYLE (available in 3" thru 6")

JOINT SIZE	SIZE CODE	A	B	C	D	E	H	Maximum cold working Pressure psi (Kg/cm ²)
3" 75mm	48	10.38" (264)	5.50" (140)	10.70" (272)	10.95" (278)	5.75" (146)	7.50" (191)	275 (19)
4" 100mm	64	11.22" (285)	7.00" (178)	12.47" (318)	13.22" (336)	7.12" (181)	9.00" (229)	275 (19)
6" 150mm	66	15.75" (400)	9.00" (229)	18.75" (476)	20.75" (527)	9.50" (241)	11.00" (279)	275 (19)

Supplied with ANSI 150 lb.
Flange pressure temperature
ratings for over +100°F (37.5°C)
Special flanges available.
Contact Barco

Barco International
1100 Alexander Court
Cary, IL 60013-1892
Phone: (847) 516-0900
Fax: (847) 516-5590



A DIVISION OF MARISON INDUSTRIES

www.barcoseals.com
e-mail: info@barcoseals.com

Specifications subject to change without notice.
Barco products are protected by patents internationally.
Copyright © 2007 Barco Division Marison Industries, Inc.

Printed in U.S.A. 02/07